

November 10, 2022

Chief Engineer and Executive Director
Engineering and Construction Services
% Manager, Development Engineering
Metro Hall
55 John Street, 16th Floor
Toronto ON M5V 3C6

c: General Manager, Toronto Water
% Manager, Environmental Monitoring
and Protection Unit
30 Dee Avenue
Toronto ON M9N 1S9

Attention: Mr. Avi Bachar, P. Eng.

Attention: Mr. Dhiren Barot

**Reference: Ground Water Sump Pump Flow Rates
5 Capri Road
Toronto, Ontario**

Dear Sirs:

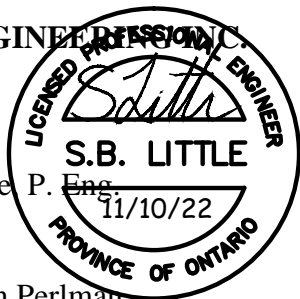
This letter shall serve to confirm that the proposed flow rate of ground water sump pumps at the above-noted project will be selected at a flow rate of 15 LPM (4.0 GPM) (ground water peak flow rate). Pump shall be Barnes SGVH-2052L, 2 HP, 575V motor.

Flow rate is based on report prepared by Grounded Engineering dated October 20, 2022.

Once the proposed ground water peak flow rate of 15 LPM is approved by Engineering Construction Services (ECS), City of Toronto at the zoning stage, the property owner will not be allowed to amend this flow rate in the future. Should there be any amendment to the peak flow rate of 15 LPM in future, the property owner shall resubmit either the updated pump schedule or a revised letter to ECS. In addition, the sewer capacity will need to be reassessed.

Yours truly

ABLE ENGINEERING PROFESSIONAL ENGINEER



Steven Little P. Eng.

SL/tb

c: Evan Perlman